

IT'S ELECTRIC!

At Hagley's Science Saturday, "The Power of Electricity," on Saturday, February 28, you can explore the world of electrical currents!

Can you match the inventors with their appliances?

- | | |
|--------------------------|----------------------|
| A. Alexander Graham Bell | 1. Electrocardiogram |
| B. Thomas Edison | 2. Computer Mouse |
| C. Willem Einthoven | 3. Light Bulb |
| D. Douglas Engelbart | 4. Telegraph |
| E. Benjamin Franklin | 5. Telephone |
| F. Guglielmo Marconi | 6. Electric Guitar |
| G. Les Paul | 7. Lightning Rod |

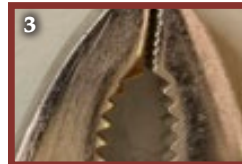
Bonus question: Which person of the above list also invented bifocals?

EASY DOES IT!

The winter months are a great time of year to explore Hagley's indoor exhibitions. Can you identify these close-ups from Hagley's "Easy Does It!" Exhibition? Come see the exhibition and learn about simple machines!



- A. bicycle tire
- B. pulley on gear lifter
- C. wheel on gear shift mechanism
- D. bicycle spokes and axle
- E. sluice gate lever
- F. pliers



FIND THE SIGNS OF SPRING!

Toward the end of the cold winter months, you can see the signs of the approaching spring. Look for those signs in the grid below.

WORD LIST

- BEE
- BLOSSOM
- BUD
- BUTTERFLY
- CARDINAL
- DOGWOOD
- FINCH
- FLOWER
- NEST
- OWL
- PEEPER
- RAIN
- ROBIN
- SNOWDROP
- SONGBIRD
- TULIP
- WOODPECKER

Z G L A B J F P F L A G K S Z H C H D Q N B S Y L
 E R B L H L I U B T G K T J T E U R C R J O R A A
 R U A L O L K O J S X O Y J H U I Q I N A H C Y N
 D B I W U U Y F W O O S Q R F B B S E R I I V Z I
 T D E T L W L J B G W O A R G R B H X Z H F N G D
 D R B M N H O R P F B R W N N D F V H C R M L P R
 O P E L W O W F Y Y S L O G Y G O U R M B Z A R A
 G U E V L S C Y L Z L S O P Y L M Z G J H B A D C
 W R E K C E P D O O W F W S Z K T E V U C P F U V
 O I L M W V U X A D M L R V S M A B K R X M I N V
 O N D S N O W D R O P X P E X O E I U X O C A U L
 D N E S T H I O N M I S C V T R M E Q T S T A H B
 Z W O Y J M O Z I P C D A I R T K L U O C M K Q L
 E P P B Z B O K B J Y Z C X U M U U E B N F S Q R
 H B R E P E E P O Z Q V M V F F J B C Q K M A I F
 X P K U R B D N R H A W V Z I Z Q P S K T F H Y S
 T K L U C Z K F B P X R C N N E T E T A V P R Y M

ANSWERS: IT'S ELECTRIC: A-5,
 B-3, C-1, D-2, E-7, F-4, G-6,
 BONUS: E
 EASY DOES IT! A-2, B-6,
 C-5, D-1, E-4, F-3

For more activities
 you can enjoy at home, visit
Hagley From Home at
HAGLEY.ORG/FROMHOME

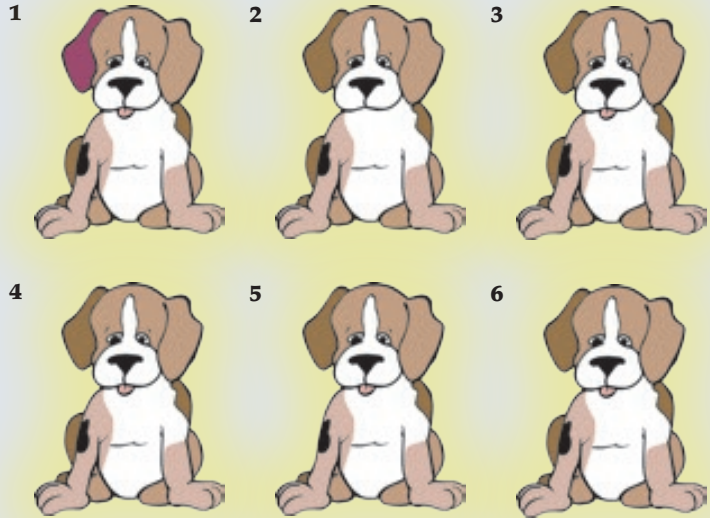


Fireworks at Hagley presented by Wilmington

Trust/M&T BANK will be held on June 12 and 19. This year's theme, "The Art of Advertising," celebrates the history and art of advertising with a spectacular display of pyrotechnics. Can you match the jingle on the left with the product on the right?

- | | |
|-------------------------------|-----------------------------|
| A. "Plop, plop, fizz, fizz" | 1. Nike |
| B. "It's slow good." | 2. McDonald's |
| C. "Just do it." | 3. Heinz Ketchup |
| D. "They're great!" | 4. Porsche |
| E. "I'm lovin' it." | 5. Kellogg's Frosted Flakes |
| F. "There is no substitute." | 6. DuPont |
| G. "The miracles of science." | 7. Alka-Seltzer |

Hagley's **Bike and Hike Evenings** will start in June and feature more Dog Days, during which you can bring your furry friends to walk Hagley's grounds! Can you tell which of the two puppies below are exactly alike?



CIVIL WAR WORD SEARCH

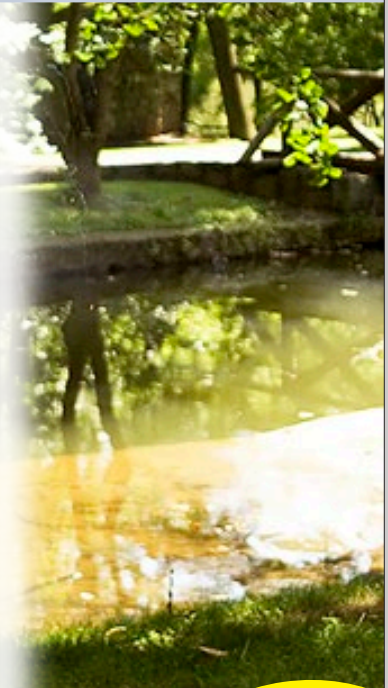
On June 27 and 28, commemorate the 150th anniversary of the end of the Civil War with **Civil War at Hagley**. Find the last names of important people from the Civil War era below.

WORD LIST

- BARTON
- BOOTH
- BROWN
- CLAY
- DAVIS
- DIX
- DOUGLASS
- GARRISON
- GRANT
- JACKSON
- LEE
- LINCOLN
- PICKETT
- SHAW
- STOWE
- TUBMAN
- TURNER
- WEBSTER

G W K F R C B M O T Q D L P D Z B W R H A M L Y S
 V A K Z H O V X K E R I R M O Y M X X T S N A I K
 Y R R I A L H M C A M X K Q U K L D W O U L K F B
 C E O R S S U D R V Q J Y I G L I J O O C U N S L
 R Y Y J I B Z B Q D E Z K P L Y Q X Y B Q S L T T
 S S N J R S W I W L H G E J A M B M I G A J O O U
 X G L O Q F O E T R X U D J S K T K P U P D C W S
 U R W V F W B N T I Q S T U S F L P C S T I N E G
 M N X X T S K D J T E A B Q N G K H X Y X B I C D
 L N R T T Z R Y O D E W I A N Y P H R R B A L D M
 H S E E N O S K C A J K M E A D J P B F K D W U A
 R F R F L A R Z Z H V B C Q V M G L J A F G A A G
 S H A W J J R F M Q U Z P I W Z K W L Y R L P Q Y
 L I U S U Z E G Q T Z P X F P T U R N E R T E G A
 G S I V A D H Q G L G M T E R R B X Z N Q D O E M
 N E Z S U W Z W F A E O O A M Y Z M F U O N Y N F
 P O O I K C R G C V B K A G P Z B Y G V I W M J G

ANSWERS: ADVERTISING SLOGANS:
 A-7, B-3, C-1, D-5, E-2, F-4, G-6
 PUPPIES THREE AND FOUR ARE EXACTLY ALIKE.



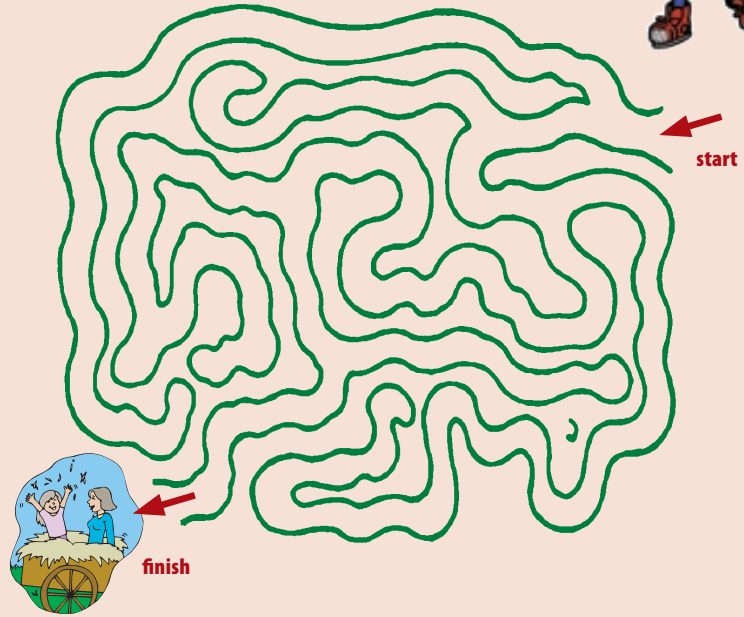
For more activities you can enjoy at home, visit **Hagley From Home** at HAGLEY.ORG/FROMHOME



At **All-American Day** on September 12, You can enjoy a historically accurate nineteenth-century "base ball" game! Can you match the city on the left with their baseball team on the right?

- | | |
|-----------------|--------------|
| A. Atlanta | 1. White Sox |
| B. Baltimore | 2. Phillies |
| C. Chicago | 3. Braves |
| D. Detroit | 4. Yankees |
| E. Los Angeles | 5. Tigers |
| F. New York | 6. Orioles |
| G. Philadelphia | 7. Dodgers |

At **Harvest Hayrides** families can ride along the Brandywine to experience the beautiful fall foliage in the Powder Yard. Can you help the Powder Keg Kid find his way to the hay wagon?



DRIVING DESIRE EXHIBITION WORD SEARCH

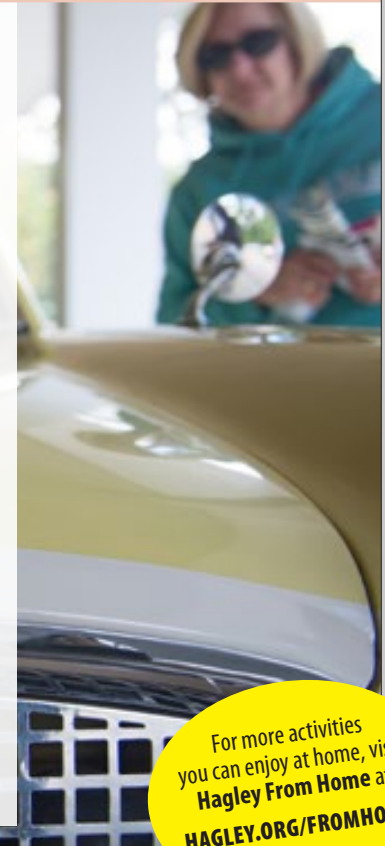
On October 2, Hagley's opens its newest exhibition, "**Driving Desire: Automobile Advertising and the American Dream.**" Find the luxury car brands in the grid of letters below.

ANSWERS: ALL-AMERICAN DAYS
 A-3, B-6, C-1, D-5, E-7, F-4, G-2

WORD LIST

- ALFA ROMEO
- ASTON MARTIN
- AUDI
- BENTLEY
- BMW
- BUGATTI
- CADILLAC
- FERRARI
- JAGUAR
- LAMBORGHINI
- LEXUS
- LOTUS
- MASERATI
- MCLAREN
- MERCEDES
- PORSCHE
- ROLLS ROYCE
- TESLA

N	T	C	Z	W	L	Z	R	C	E	N	R	J	J	U	F	L	A	I	G	F	Y	S	Y	N
H	D	B	D	U	Q	Q	A	E	I	J	S	A	B	C	B	P	L	J	S	Q	O	Q	E	P
S	O	C	Y	C	Y	D	A	T	Q	C	G	E	X	K	T	Y	F	Y	S	T	Q	E	L	O
M	M	K	B	V	I	U	R	B	P	U	C	S	D	C	I	T	A	R	E	S	A	M	T	R
A	C	J	K	L	B	A	N	O	A	W	K	N	D	E	H	W	R	Q	N	A	H	S	N	S
L	P	L	L	I	M	C	F	R	M	H	R	Y	C	N	C	Q	O	I	U	L	D	I	E	C
S	R	A	A	N	L	A	M	B	O	R	G	H	I	N	I	R	M	F	X	T	T	J	B	H
E	C	O	O	R	S	U	X	E	L	L	Z	O	I	V	J	E	E	G	S	T	S	R	N	E
T	X	T	L	A	E	C	I	F	C	K	D	A	E	S	Y	P	O	M	A	U	W	Y	Q	O
B	S	G	I	L	X	N	Y	U	C	S	M	T	Y	H	S	P	A	G	O	V	T	Q	Y	U
A	D	T	S	L	S	L	J	O	F	P	U	A	P	F	T	R	U	J	B	B	O	O	B	B
R	J	P	Z	Z	K	R	S	I	J	H	K	J	U	L	R	B	M	B	G	V	Q	W	L	B
B	L	L	S	Z	Y	H	O	K	Q	E	D	I	O	Q	I	D	D	E	G	G	J	Y	B	S
O	W	V	Y	S	F	Q	B	Y	S	I	I	J	B	T	Z	Y	T	N	F	S	K	X	F	O
R	A	K	U	W	Z	C	Y	V	C	I	S	O	C	M	S	N	I	O	M	N	V	P	T	R
Q	T	X	M	K	X	D	D	B	N	E	U	U	G	L	N	G	M	T	Y	H	N	P	V	R
T	W	C	Q	R	B	Y	C	M	F	E	R	R	A	R	I	H	N	W	U	P	G	C	J	M



For more activities you can enjoy at home, visit **Hagley From Home at HAGLEY.ORG/FROMHOME**

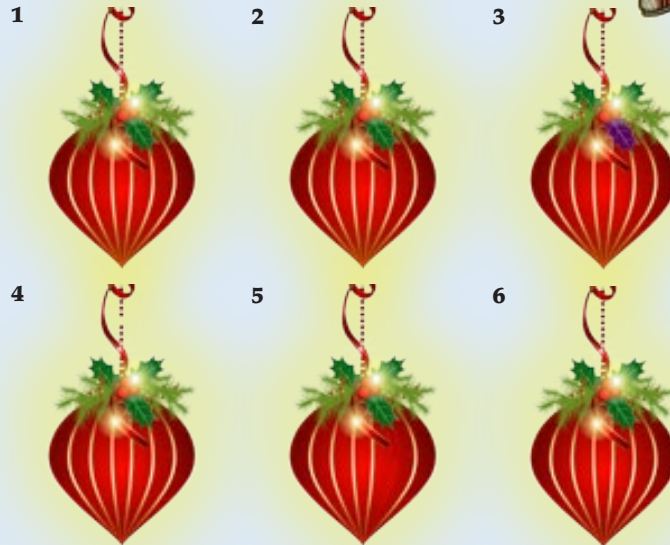


VALENTINE'S DAY TRIVIA

Hagley offers wonderful programming during the winter months, including Science Saturdays and Victorine's Valentine's Day. Here are some facts about Valentine's Day:

- In Victorian times it was considered bad luck to sign a Valentine's Day card.
- About three percent of pet owners will give Valentine's Day gifts to their pets.
- About one billion Valentine's Day cards are exchanged each year.
- In Finland, Valentine's Day is called Ystävänpäivä, which translates into "Friend's day." It is more about remembering your friends than your loved ones.
- In the Middle Ages, young men and women drew names from a bowl to see who would be their Valentine. They would wear this name pinned onto their sleeves for one week for everyone to see. This was the origin of the expression "to wear your heart on your sleeve."
- More than 35 million heart-shaped boxes of chocolate will be sold for Valentine's Day.

At **Holiday Family Programming** on November 27, 28, and 29, you can play parlor games and make Victorian christmas ornaments. Which two ornaments below are exactly alike?



SCIENCE SATURDAY WORD SEARCH

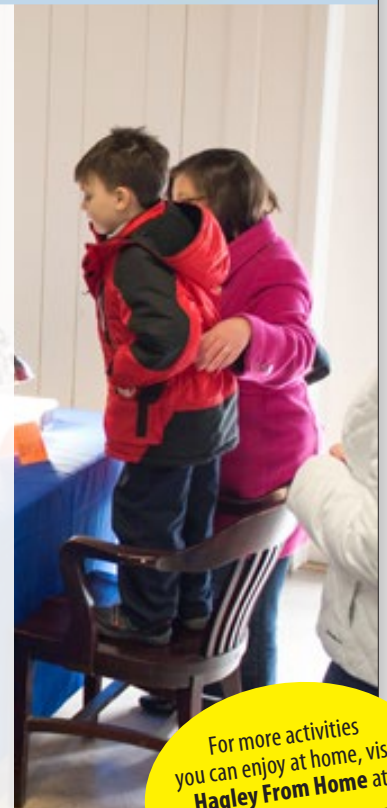
Science Saturdays are held from 1 to 4 p.m. December 12 is **Color and Light**, January 9 is **Float Your Boat**, and January 23 is **Bridge the Divide**. Find the words related to **color**, **light**, **boats**, and **bridges** below.

WORD LIST

- RED
- ORANGE
- YELLOW
- BLUE
- INIGO
- VIOLET
- SAIL
- BEAM
- STERN
- BOW
- DECK
- HULL
- BEARINGS
- DRAINAGE
- FOOTING
- FOUNDATION
- PARAPETS
- PIERS

D A M O H N S L S V E T A M S P D B L I A S B T O
X K C O K O Z T P R Q L N N S I R W E R X C G A R
P J Z B A X J W E E A T H H M E A P M A R O U V I
G N I T O O F O R R H B Q D E R I V E J R E Y A L
H X H L F R Q L O J N R K G R S N A S L T I G E W
I P N H E F T L L D S B E T W A A G Y E J P N N D
V E B B T G S E Y R E D O G Y X G C L R F V M G P
K I N I G O N Y W U G Q U W J M E O A Q C X D A S
E U B I E P N A N E D O S V V Z I M J G N D R G U
O H J Z Q F G R R N X O Q H X V K T A A R A I B P
V R W R X N G W R O S P L I O R C P V E P M A M Z
Y F Q J G X W D E R X A L I Z Y E K K E B Z L N J
Z H X R R P D N U K I P B D D I D G T K A L U T M
B B A P D U H V O J G L Y Q B J H S W Y U M E W H
P I Z L A S Y K R L U X E P F N D V P H K N N Z Z
P F P H L L Q G S E O F O U N D A T I O N W C Y U
J B T Q Q K R H R N U Q R N G I R S F X Q V Z Q T

ANSWERS: ORNAMENTS TWO AND SIX ARE EXACTLY ALIKE.



For more activities you can enjoy at home, visit **Hagley From Home at HAGLEY.ORG/FROMHOME**

